

ΠΑΡΑΡΤΗΜΑ .....34.....

Try out [PMC Labs](#) and tell us what you think. [Learn More.](#)



The Open Access journal for  
Life & Environment research

[VIEW ARTICLES](#)

PeerJ. 2019; 7: e7142.

Published online 2019 Jun 26. doi: [10.7717/peerj.7142](https://doi.org/10.7717/peerj.7142)

PMCID: PMC6599448

PMID: [31289698](https://pubmed.ncbi.nlm.nih.gov/31289698/)

## Optical microscopic study of surface morphology and filtering efficiency of face masks

Bhanu Bhakta Neupane,<sup>✉1</sup> Sangita Mainali,<sup>2</sup> Amita Sharma,<sup>3</sup> and Basant Giri<sup>3</sup>

Academic Editor: Todd Anderson

<sup>1</sup>Central Department of Chemistry, Tribhuvan University, Kathmandu, Nepal,

<sup>2</sup>Department of Chemistry, Amrit Campus, Tribhuvan University, Kathmandu, Nepal,

<sup>3</sup>Center for Analytical Sciences, Kathmandu Institute of Applied Sciences, Kathmandu, Nepal,

<sup>✉</sup>Corresponding author.

Bhanu Bhakta Neupane: [bbneupane@cdctu.edu.np](mailto:bbneupane@cdctu.edu.np)

Received 2019 Mar 21; Accepted 2019 May 17.

Copyright © 2019 Neupane et al.

This is an open access article distributed under the terms of the [Creative Commons Attribution License](#), which permits unrestricted use, distribution, reproduction and adaptation in any medium and for any purpose provided that it is properly attributed. For attribution, the original author(s), title, publication source (PeerJ) and either DOI or URL of the article must be cited.

### Abstract

#### Background

Low-cost face masks made from different cloth materials are very common in developing countries. The cloth masks (CM) are usually double layered with stretchable ear loops. It is common practice to use such masks for months after multiple washing and drying cycles. If a CM is used for long time, the ear loops become stretched. The loop needs to be knotted to make the mask loop fit better on the face. It is not clear how washing and drying and stretching practices change the quality of a CM. The particulate matter (PM) filtering efficiency of a mask depends on multiple parameters, such as pore size, shape, clearance, and pore number density. It is important to understand the effect of these parameters on the filtering efficiency.

#### Methods

We characterized the surface of twenty different types of CMs using optical image analysis method. The filtering efficiency of selected cloth face masks was measured using the particle counting method. We also studied the effects of washing and drying and stretching on the quality of a mask.

#### Results

The pore size of masks ranged from 80 to 500  $\mu\text{m}$ , which was much bigger than particulate matter having diameter of 2.5  $\mu\text{m}$  or less ( $\text{PM}_{2.5}$ ) and 10  $\mu\text{m}$  or less ( $\text{PM}_{10}$ ) size. The  $\text{PM}_{10}$  filtering efficiency of four of the selected masks ranged from 63% to 84%. The poor filtering efficiency may have arisen from larger and open pores present in the masks. Interestingly, we found that efficiency dropped by 20% after the 4th washing and drying cycle. We observed a change in pore size and shape and a decrease in microfibers within the pores after washing. Stretching of CM surface also altered the pore size and potentially decreased the filtering efficiency. As compared to CMs, the less frequently used surgical/paper masks had complicated networks of fibers and much smaller pores in multiple layers in comparison to CMs, and therefore had better filtering efficiency. This study showed that the filtering efficiency of cloth face masks were relatively lower, and washing and drying practices deteriorated the efficiency. We believe that the findings of this study will be very helpful for increasing public awareness and help governmental agencies to make proper guidelines and policies for use of face mask.

**Keywords:** Face mask, Particulate matter, Filtering efficiency, Pore morphology

## Introduction

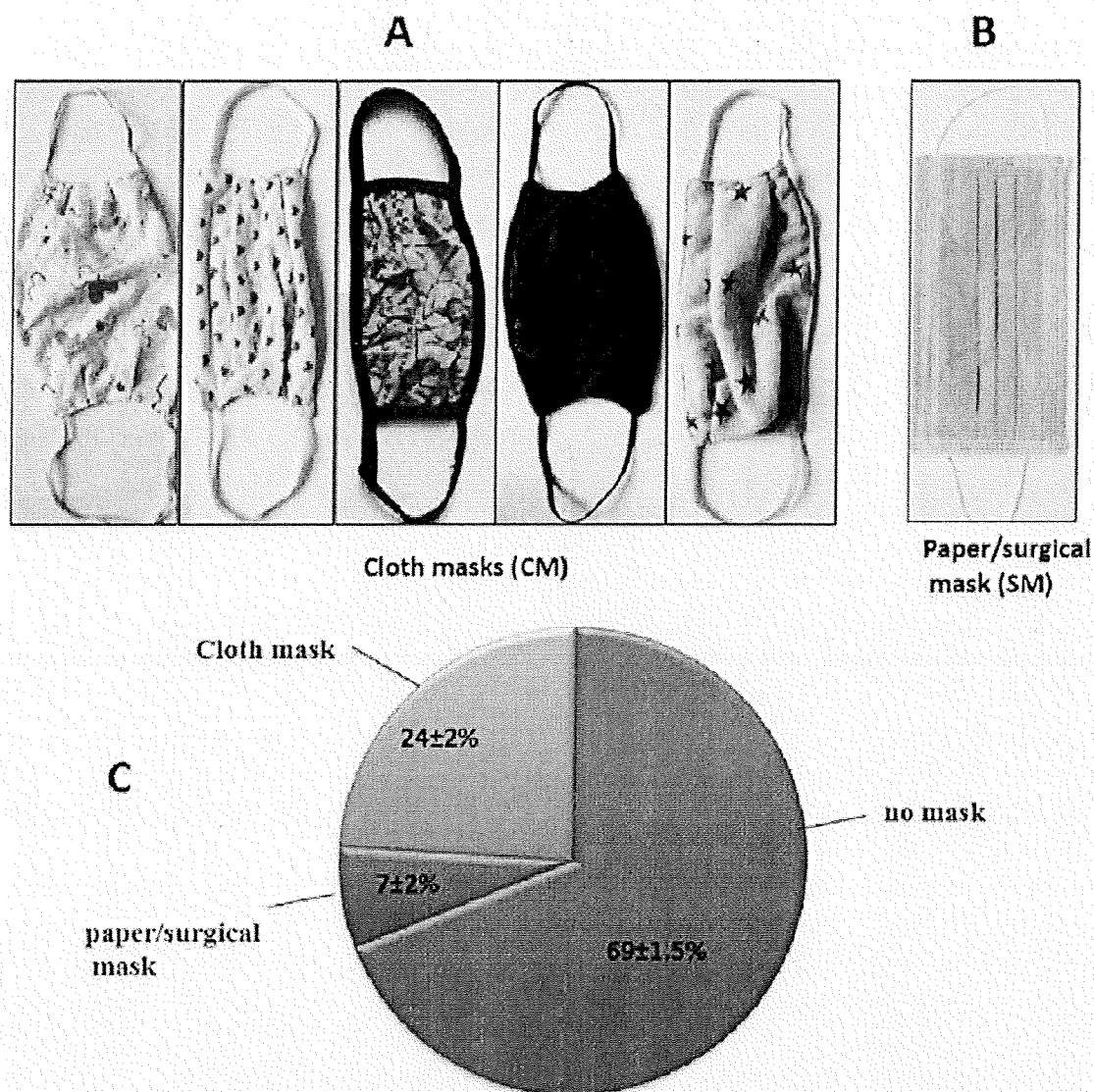
Particulate matter (PM) contributes significantly to overall ambient air pollution. Microscopic particles having a diameter of 2.5  $\mu\text{m}$  or less ( $\text{PM}_{2.5}$ ) can become deposited in the conducting zone of the respiratory system including the alveoli, and penetrate to the cardiovascular system. These fine particles are believed to be responsible for various health problems such as lung inflammation and lung cancer, vascular dysfunction, myocardial infarction, and exacerbation of existing conditions like asthma, diabetes mellitus (Reche et al., 2012; Kim, Kabir & Kabir, 2015; World Health Organization, 2016). The World Health Organization (WHO) estimates that ambient air pollution caused around 4.2 million deaths in 2016, with Asia alone contributing around 60% of total global burden (World Health Organization, 2016).

The PM pollution in many cities globally is higher than the WHO recommended safe limit (Wang et al., 2008; Colbeck, Nasir & Ali, 2010; Sharma et al., 2014; World Health Organization, 2016; Maleki et al., 2016). For example, in Kathmandu Valley, one of the most densely populated and the fastest-growing cities in Asia, air quality is very poor, with PM alone contributing to around 50–60% of total pollution burden. The ambient annual average  $\text{PM}_{2.5}$  concentration levels in core urban areas of Kathmandu, Nepal has been reported to be around 54  $\mu\text{g}/\text{m}^3$ , which is significantly higher than the WHO standard of 10  $\mu\text{g}/\text{m}^3$  (World Health Organization, 2016; IQ Air, 2018). In recent years, a systematic study on exposure of  $\text{PM}_{2.5}$  (finer fractions of  $\text{PM}_{10}$ ) to subjects of different occupations was made in few core and sub-urban areas of Kathmandu Valley. The hourly personal  $\text{PM}_{2.5}$  exposure to traffic police who spend 8–12 h on road duty was found in the range of 40–80  $\mu\text{g}/\text{m}^3$  (Gurung & Bell, 2012), which is 1.6–3.2 times higher than WHO standard for 24 h average of 25  $\mu\text{g}/\text{m}^3$  (World Health Organization, 2016).

The PM pollution can be minimized by putting forwarding both short- and long-term policies and regulations and enforcing them. Efforts have been made, but their impact in minimizing pollution is almost futile in the cities of developing countries.

Studies have shown that face masks reduce the exposure to PM and other contaminants (Singh et al., 2010; Chughtai, Seale & MacIntyre, 2013; MacIntyre et al., 2015; Shakya et al., 2017). The most commonly used face masks are cloth masks (CMs) and surgical masks (SMs). The effectiveness of a mask is measured by its filtering efficiency. A mask is considered effective if its filtering efficiency is greater than 95%. The efficacy of a mask depends on type of mask material (Mueller et al., 2018), particle size and charge of aerosol tested (Shakya et al., 2017), and user preference (Maxted, 2011; Chughtai, Seale & MacIntyre, 2013).

The CMs are particularly popular in developing countries because they are inexpensive (unit retail price range: USD 0.08–1.5), locally available, and reusable after washing. The CMs are usually double layered (two ply masks) with stretchable ear loops (see [Figs. 1A](#) and [1B](#)). The face masks have also been widely used in healthcare facilities to minimize contamination ([Chughtai, Seale & MacIntyre, 2013](#)), in emergency situations such as volcanic eruptions ([Mueller et al., 2018](#)) and in occupational hazard protection ([Belkin, 1997](#); [Van Der Sande, Teunis & Sabel, 2008](#); [MacIntyre & Chughtai, 2015](#); [Cherrie et al., 2018](#)).



**Figure 1**

Types of mask and survey.

(A) Images of some of the most commonly used cloth masks, and less commonly used surgical mask (B).  
(C) Face mask use pattern in Kathmandu. The % errors in the figure represent standard deviation.

Previous studies have reported the measurement of filtering efficiency of CMs using lab generated aerosol, polystyrene latex, virus, micro-size particles and diesel exhaust ([Rengasamy, Eimer & Shaffer, 2010](#); [MacIntyre et al., 2015](#); [Shakya et al., 2017](#)). As the ambient aerosol we are exposed to is a mixture of particles of varying size and shape in ambient environmental condition, use of simulated particles in controlled laboratory setting may not truly represent the filtering efficiency of masks.

The most commonly used face masks in low-income countries are CMs. Such masks are used for many days and are also used after washing and drying multiple times. In addition, the one-for-all type ear loop of mask does not fit everyone. Therefore, the loop has to be knotted or stretched for better fitting on the face. The washing, drying and stretching practices may change the pore size and porosity of the fabric and thus may deteriorate filtering efficiency. There are no published reports on the surface morphology of face masks and the effect of washing and stretching on pore size of the masks.

In this work, we report on the detail study on surface characterization (pore size, shape, clearance, and pore distribution) of commonly available cloth face masks purchased from local market of Kathmandu, Nepal, and compared with surgical face masks using bright field microscope. We then measured the efficacy of masks on filtering ambient outdoor aerosol particles by particle counting method. Finally, we report on the effect of washing and drying cycles and stretching on surface characteristics and filtering efficiency of CMs.

## Materials and Methods

---

### Survey study

We began our study by conducting a survey to know the type of masks people use in Kathmandu. We counted 1,500 people walking through the junction road in Kalanki, Kathmandu and noted number of people wearing face mask and type of mask. The visual counting was carried out from 9.00 am to 1.00 pm for 3 consecutive days in the month of May 2016. Kalanki is a major traffic intersection in Kathmandu.

### Surface characterization of masks

A total of 20 different types of cloth face masks (CM) and seven different brands of SMs were purchased from local markets in Kathmandu (Figs. 1A and 1B). The CM types were selected on the basis of design and fabric material. A small section of each mask was cut and was imaged using an optical microscope in bright field mode using objective of 0.4 NA (10 $\times$ , air) with total magnification of 100 $\times$ . A built in white LED was used as illumination source and image was acquired by a CMOS camera (AmScope, Irvine, CA, USA). For each mask 10 images were taken and the collected images were processed in ImageJ software (NIH, Bethesda, MD, USA). The field of view of measured image was calibrated by using a calibration glass slide having grid size of 10  $\mu$ m (AmScope, Irvine, CA, USA). The intensity of light used before the lens was around one mW/cm<sup>2</sup>. Acquisition time of image, unless specified, was set to 500 ms.

### Measurement of filtering efficiency

Microscope coverslips (Corning, 1.5, 22  $\times$  22 mm) were placed on a polystyrene petri dish (Microteknic, Haryana, India, 80 mm diameter and 13 mm depth) and the petri dish was covered with a face mask. To make sure coverslip surface is free from particles, the surface was cleaned and inspected by the bright field microscope. To ensure no marginal leakage of particles, the mask was fastened to the petri dish with a rubber band. The whole assembly was kept at 20 feet above the ground in an open box in central Kathmandu. Major sources of PM pollution in this area are vehicular exhausts, dust suspensions, and particles from poorly maintained roads. For control measurement, a second assembly was made without mask and kept in the same place. Both assemblies were exposed to PM for 30 min and number of particles deposited on the glass coverslip surface was counted after the surface was imaged at magnification of 100 $\times$  with a bright field microscope.

One mask type was sampled at a time and triplicate measurements were carried out for each mask. All experiments were made in sunny days during 11.00 am to 1.00 pm time period. Although we did not measure the wind velocity at our site, the wind velocity was low ( $\sim$ 10 km/h) at Tribhuvan International Airport, which is just two km aerial distance away.

The filtering efficiency was calculated as:

$$\text{Filtering efficiency (\%)} = (a - b)100/a, \quad (1)$$

where  $a$  and  $b$  are the number of particles without and with mask, respectively.

To measure the mask efficiency after washing and drying cycles, mask was soaked for 1 h in 2% (w/v) aqueous solution of powder detergent that contained alkyl-benzene sulfonate and sodium triphosphate as main ingredients. The mask was rinsed multiple times with water so as to get rid of the detergent. The mask was then laid on a flat surface to make sure no stretching of the cloth fibers, and the mask was air dried. Filtering efficiency was measured after each washing and drying cycle by using the procedure mentioned in the above paragraph.

To the best of our knowledge, the particle counting method stated above is novel for the determination of filtering efficiency of a mask.

### Determination of particle size

To measure the particle size, particles were deposited on coverslip and imaged at 100× magnification using the bright field microscope. The resolution of the microscopic system was 0.6 μm. The field of view of measured image was calibrated by using a calibration glass slide having grid size of 10 μm (AmScope, Irvine, CA, USA), and particles size was estimated.

## Results

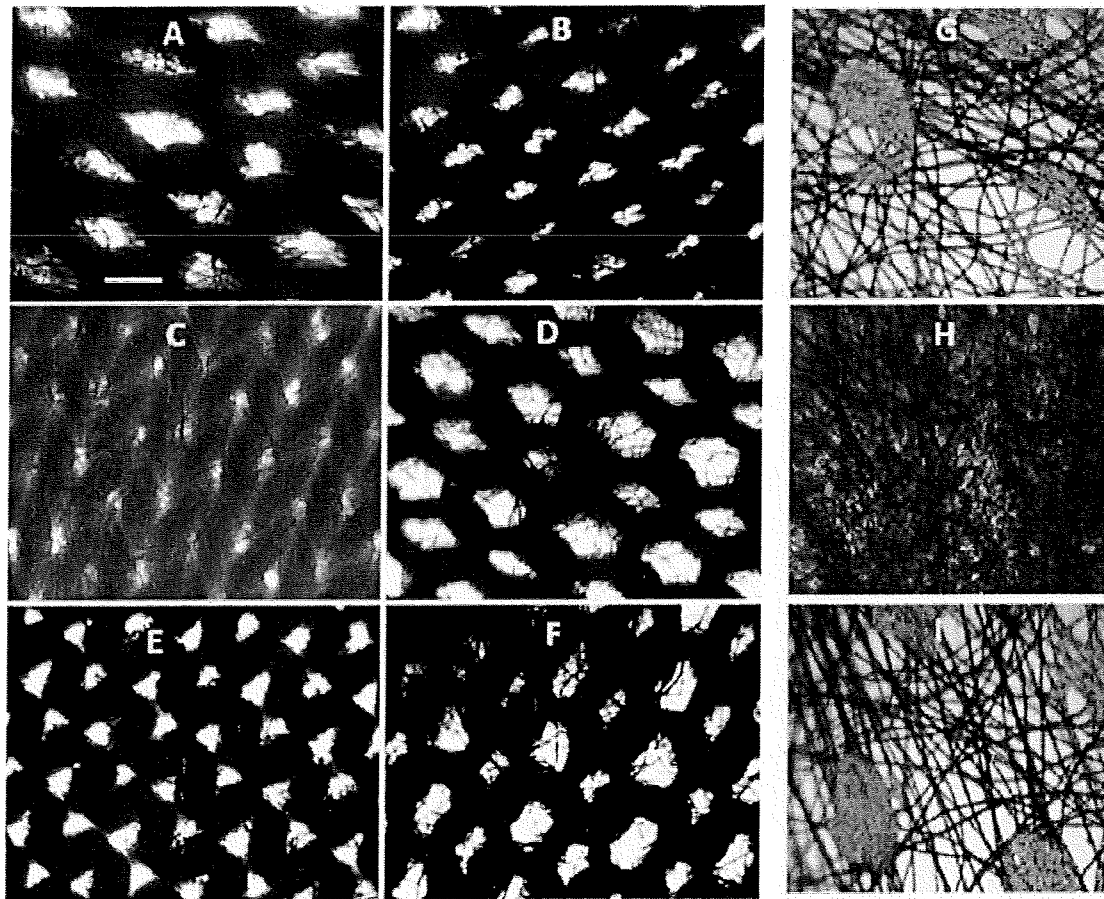
---

### Survey study

A survey conducted in Kalanki, Kathmandu, Nepal showed that 31% people used face mask while they were at or close to busy roads (see [Fig. 1C](#)). Kalanki is an urban area of Kathmandu and a major cross-section for exit and entry to the Kathmandu Valley from rest of the Nepal. It gets large number of vehicular movements since early morning to late night.

### Surface characterization

The representative microscopic images of different CMs and SMs are shown in [Fig. 2](#). Out of 20 CMs (CM1-CM20) imaged, for brevity, images of CM1, CM3, CM7, CM9, CM12, CM18 are shown in A, B, C, D, E, and F, respectively. The bright patches in the image are the pores present in the mask. All CMs studied contained two ply (layers) and the surface characteristics of both layers was very similar.



[Open in a separate window](#)

**Figure 2**

**Bright field microscopic images of mask surfaces.**

(A) Representative images for CM1, (B) CM3, (C) CM7, (D) CM9, (E) CM12, and (F) CM18. (G) Representative images of inner, (H) middle, and (I) outer layers of a three layered surgical mask. Scale bar shown (A) is 500  $\mu\text{m}$  and applied to all images.

Although the pore shape and size in CMs were not uniform (see Figs. 2A–2F), we tried to extract quantitative information on the size of the pores by measuring the longest dimension of each pore. Such measurements provided an upper estimation of the size of a pore in each CM. The mean pore size ranged from 81 to 461  $\mu\text{m}$ , with smallest pore size observed for CM4 ( $81 \pm 29 \mu\text{m}$ ) and largest pores observed for CM9 ( $461 \pm 108 \mu\text{m}$ ).

The particulate matter filtering efficiency of a mask also depends on number of pores per unit area; referred here to as pore number density. To get this information, we counted number of pores per microscopic field of view (field of view was  $4.5 \text{ mm}^2$ ). We found very diverse number of pores ranging from around 12 (CM11) to 47 (CM15).

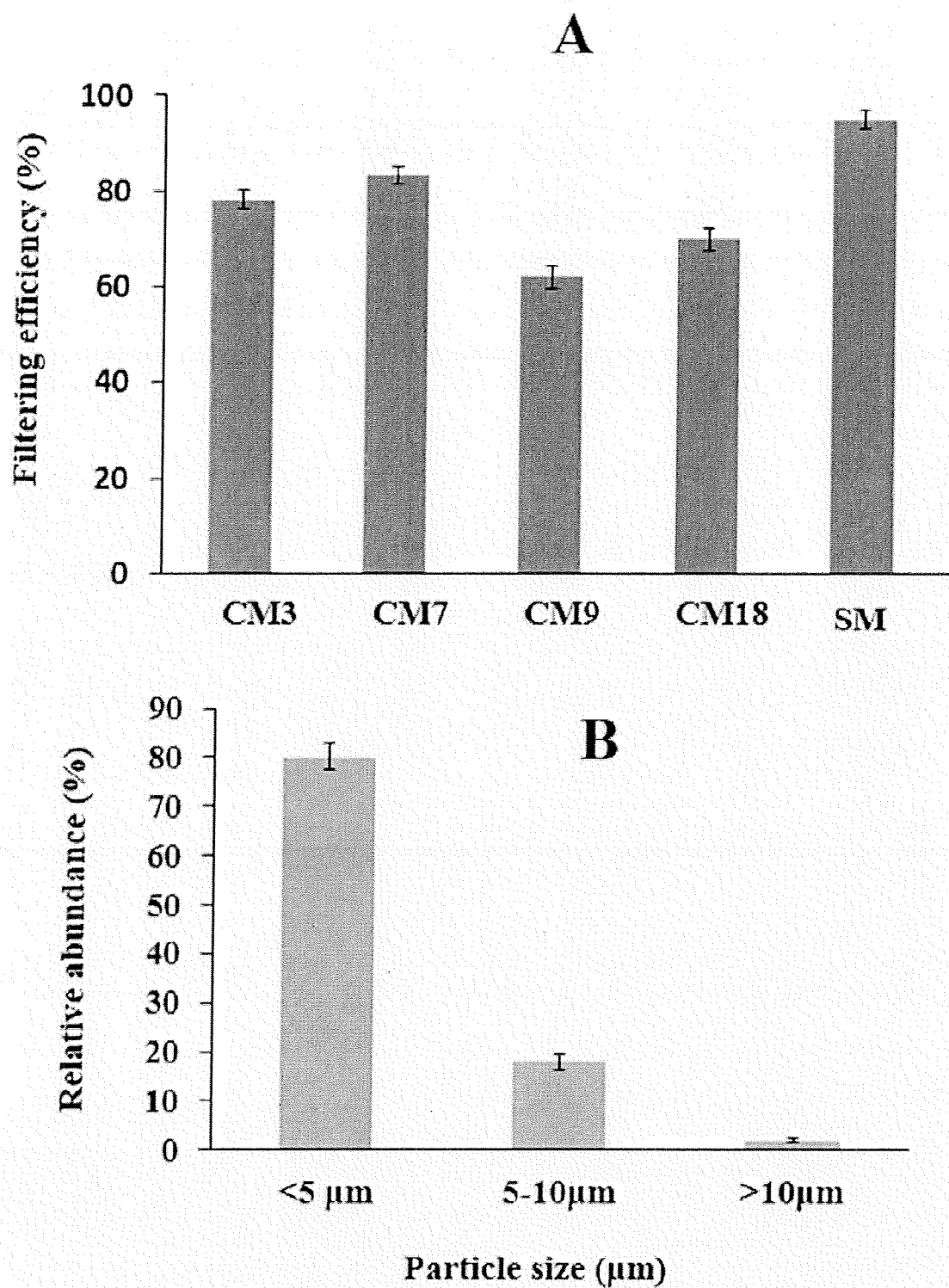
For comparison, we also examined the surface of seven different brands of paper/SMs masks available in market. The masks examined contained two or three layers (two or three ply). The surface morphology of the inner, middle, and outer layers of a three ply SM is shown in Figs. 2G–2I, respectively.

### Filtering efficiency



To find out if there is any correlation between surface structure and filtering efficiency, we measured the filtering efficiency of selected CMs (CM3, CM7, CM9, CM18), and one SM. The filtering efficiency is reported in [Fig. 3A](#). The filtering efficiency was measured by particle counting method using ambient PM. The particle size information is shown in [Fig. 3B](#). Around 98% particles in ambient air was smaller than 10  $\mu\text{m}$  which is consistent with a recent study reported by our group ([Rauniyaar, Aryal & Neupane, 2019](#)). Thus, the filtering efficiency of face mask reported in [Fig. 3A](#) can be considered as  $\text{PM}_{10}$  filtering efficiency. [Figure 3A](#) also shows that filtering efficiency of CMs ranged from 63% to 84%, with the poorest efficiency of 63% measured for CM9. The filtering efficiency of SM was found to be 94%.





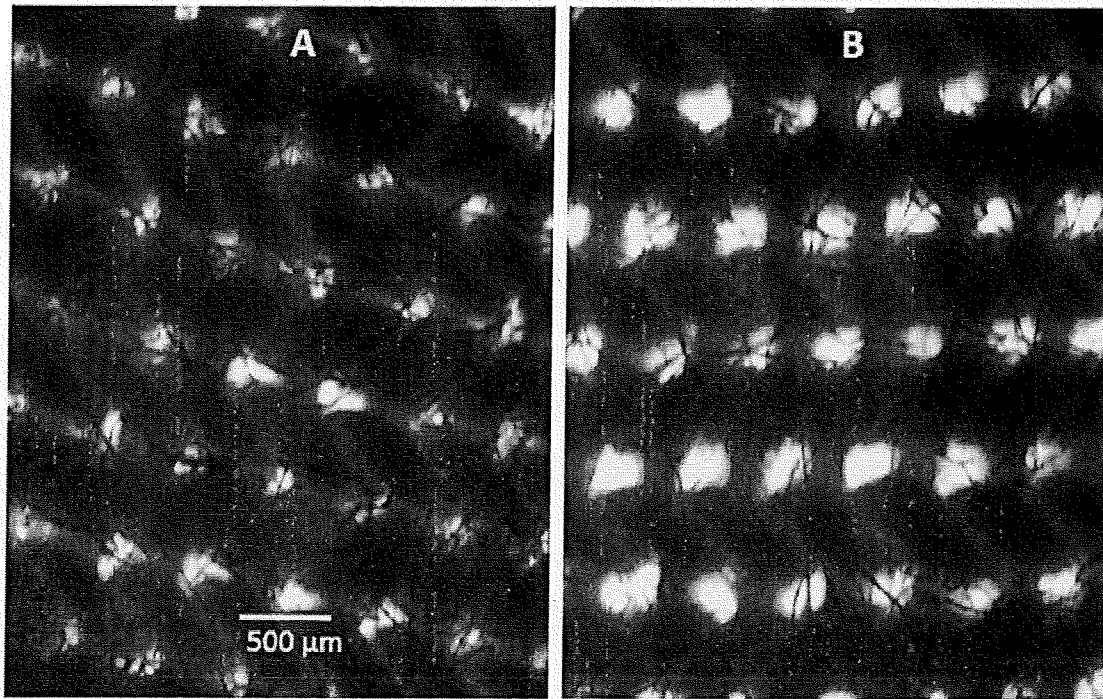
[Open in a separate window](#)

**Figure 3**

Measurement of filtering efficiency.

(A) Filtering efficiency of selected cloth face masks (CM) and a surgical mask (SM). The error bars represent standard deviation in each efficiency value reported ( $n = 3$ ). (B) Size distribution of ambient particulate matter used in this study.

We also explored how the surface of a mask changes on stretching the mask. To explore this, surface of a CM was stretched and microscopically observed the surface while being stretched. Representative images of mask CM7 in stretched (change in length of mask/original length of mask =  $\Delta L/L \sim 0.05$ ) and unstretched conditions is shown in Figs. 4A and 4B, respectively. Careful comparison of these images shows that on stretching surface is distorted, with an increase in pore size and a change in shape. We found similar effects for other CMs, although the extent of the distortion was different. We did not find such changes for SM.



[Open in a separate window](#)

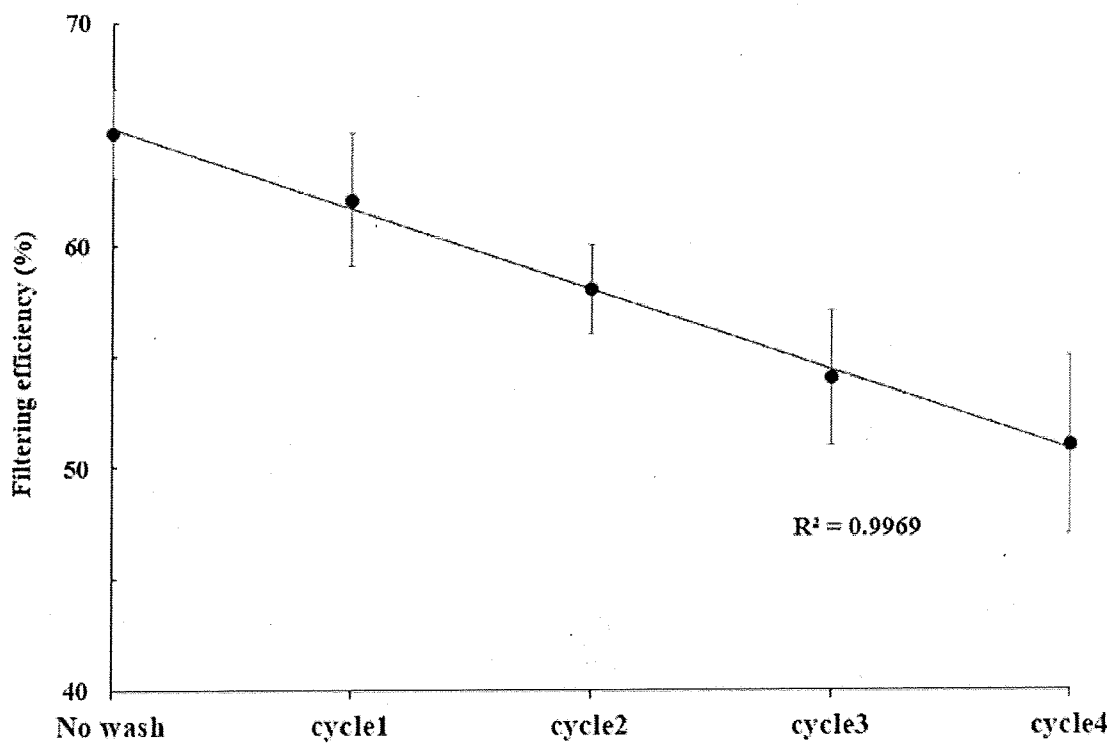
**Figure 4**

**Effect of stretching on mask surface.**

(A) Bright field microscopy images of CM7 in unstretched and (B) stretched conditions. Scale bar shown in (A) is 500  $\mu\text{m}$ .

### Effect of washing and drying

To explore the effect of washing and drying in the filtering efficiency, we selected a cloth mask CM9. The filtering efficiency measured after each washing and drying cycle for up to four cycles is shown in Fig. 5. With increase in washing and drying cycles there is gradual decrease in filtering efficiency ( $R^2 = 0.99$ ).



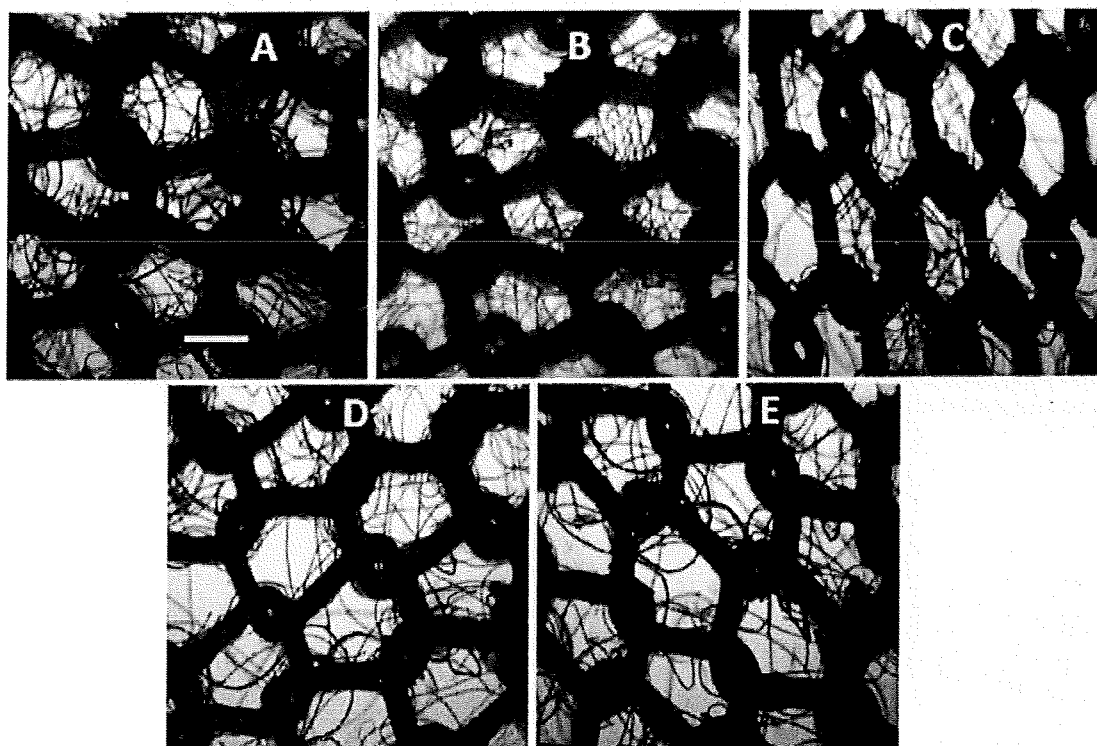
[Open in a separate window](#)

**Figure 5**

**Effect of washing and drying on filtering efficiency.**

Filtering efficiency for CM9 measured after washing and drying cycles. The error bars represent standard deviation in each efficiency value reported ( $n = 3$ ).

To find the possible cause of change in filtering efficiency with washing and drying, we imaged mask surface after each cycle. The representative images are shown in [Fig. 6](#).



[Open in a separate window](#)

**Figure 6**

Optical images after washing and drying cycles.

(A) Bright field microscopic images of unwashed CM9, and after (B) first, (C) second, (D) third, and (E) fourth washing and drying cycles. The scale bar shown in (A) is 500  $\mu\text{m}$  and applied to all images.

## Discussion

### Surface characterization

It is very obvious from the images shown in [Figs. 2A–2F](#) that pore size, shape, inter pore distance, and number of pores per field of view were very different for all the CMs. For examples, CM7 has the smallest and nearly circular pores and CM9 has largest pores and pores are nearly hexagonal, CM12 has medium sized triangular pores. If pores of all CMs are closely inspected, the pores are not perfectly clear but contain microfibers passing from one end of pore to next.

It is evident that the inner ([Fig. 2G](#)) and outer ([Fig. 2I](#)) layers of surgical face mask have a very similar surface structure, with distinctly visible interwoven cellulose fibers and open spaces. Although the features in the middle layers ([Fig. 2H](#)) are not distinctly discernible due to the limited resolution of the microscopic set up used in this study, we can tell that this layer has micro/nanoporous membrane-like structures. The presence of three layers, with the middle layer having very small pores, shows that the medical mask may be efficient in blocking the PM.

We also explored if there is any difference on the interior surface of CMs and SM. This was achieved by scanning the mask surface in axial direction while keeping the microscope objective fixed. Video was recorded during the axial scanning. A representative video collected for CM and SM is shown in [Supplemental Information 1](#) and [2](#), respectively. A careful comparison of two videos tells that SM has nicely interwoven microfibers with smaller pores indicating better filtering efficiency in comparison to CMs.

### Filtering efficiency

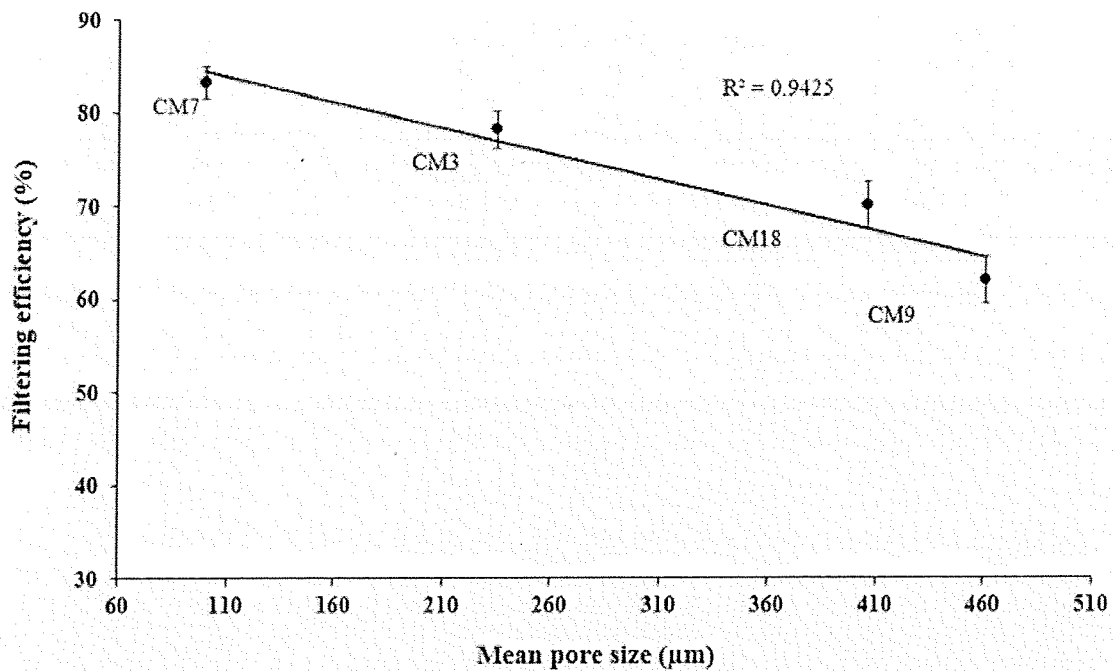
Filtering efficiency is particle size dependent (Belkin, 1997) with lower efficiency observed for smaller sized particles. The size of PM is source dependent and depending on source size can be as small as few tenth of nanometer (Mirowsky et al., 2013). The size distribution of ambient particles used in this work is shown in Fig. 3B. Lateral resolution ( $D_{xy}$ ) of microscope system used in this study, based on Eq. (2) (Hell, 2007; Stender et al., 2013; Neupane, 2016)

$$D_{xy} = \frac{\lambda}{2NA} \quad (2)$$

with objective of 0.4 NA (NA = numerical aperture) and illumination light of wavelength ( $\lambda$ ) of 500 nm, is around 0.6  $\mu\text{m}$ . In this regard, actual size of particles measured can have some uncertainty. Nonetheless, classification of particles in three categories viz. <5, 5–10, and >10  $\mu\text{m}$  was possible in our case. As shown in Fig. 3B, a total of 98% particles were smaller than 10  $\mu\text{m}$ , which is in consistent with a recent study reported by our group (Rauniyaar, Aryal & Neupane, 2019). Thus, the filtering efficiency of the face mask reported in Fig. 3A can be considered as PM<sub>10</sub> filtering efficiency.

Bright filed microscopy is frequently used in the determination of number density of micro-meter sized objects (Ricardo & Phelan, 2008; Drey, Graber & Bieschke, 2013; Rauniyaar, Aryal & Neupane, 2019). The accuracy in such measurement is high if: (1) light scattering efficiency of an object to be imaged is high so they can be contrasted from the background, and (2) individual dispersion in the field of view can be achieved. In our case, scattering efficiency of particles is higher than background, and we maintained number of particles per field of view low so that number density can be determined.

The filtering efficiency reported in Fig. 3A was negatively correlated with pore size of the masks, ( $R^2 = 0.94$ ) (Fig. 7). The poor efficiency of CM9 (~63%) is due to the presence of larger and open pores (pores size  $461 \pm 113 \mu\text{m}$ ) and improved efficiency of CM7 (~84%) is due to presence of smaller pores (pores size  $100 \pm 53 \mu\text{m}$ ). It is interesting to note that filtering efficiency of CM9 is still >60% although the pores are much bigger than the reported particle size. This contradiction may be due to low pore density of the masks and mismatch of the pores in two layers during use. The filtering efficiency of SM was 94%. Again, the excellent filtering efficiency can be attributed to the presence of nicely interwoven microfibers with small pores (in middle layer) as reported in Figs. 2G–2I. The difference in morphology of surgical and CMs is more obvious in Supplemental Information 1 and 2 that show axial scanning of a CM and a SM, respectively.



[Open in a separate window](#)

**Figure 7**

**Correlation between pore size and filtering efficiency.**

Each data point represents the mean pore size of mask (in μm) plotted as a function of filtering efficiency. The solid line is the linear fit to the data points.

We used a novel particle counting method to determine the filtering efficiency of face masks. Our method is passive sampling method as it measures the filtering efficiency of free falling dust particles without considering active suction to mimic human inhalation and exhalation. Efficiency was determined by the passive transfer of the particles from one side of the mask to the other. Therefore, this method provides the upper estimate of filtering efficiency or best-case-estimate of capture efficiency of mask. Although our method did not mimic the breathing condition, it allowed us to measure the filtering efficiency using ambient PM. If a standard mask (N95 or 99) is available, our method could be a cheaper alternative to screen the relative efficiency of a mask of unknown efficiency and compare with a standard mask such as N95 or N99.

Filtering efficiency of CM has also been reported in other studies by using active sampling method (Rengasamy, Eimer & Shaffer, 2010; Shakya et al., 2017). They have reported that filtering efficiency of a CM depends on the nature of particles (size and charge) used to measure the filtering efficiency, nature, and design of mask. Their reported efficiency is in the range of 10–90% and conclude that CM perform poorer than N95 SM. In contrast, we used passive method and ambient PM. The surface characteristics of masks could also be different. Therefore, efficiency values are difficult to compare. Nonetheless, our conclusion is same; that is, CM perform poorer than SMs.

### Stretching effect on mask surface

Figure 4 shows that mask (CM7) surface changed on stretching with significant increase in pore size in stretched mask. This observation is very important. People use CM for months and the ear loops get stretched. The loop has to be knotted to make the mask fit better on the face. If mask having knotted ear-loop is used, it is very likely that the whole mask surface gets stretched. Although we did not

measure the filtering efficiency while the mask was stretched, it can be easily inferred that efficiency will decline if a mask with a knotted ear-loop is used due to changes in pore morphology as observed in Fig. 4.

### Effect of washing and drying

The filtering efficiency measured after each washing and drying cycle for up to four cycles is shown in Fig. 5. We found a gradual decrease in filtering efficiency with an increase in washing and drying cycle. As compared to an unwashed mask of efficiency ~63%, after the 4th washing and drying cycle there was ~20% drop in filtering efficiency.

A close observation of images in Fig. 6 shows that small changes in surface morphology occur after each cycle. The first change is increase in pore size and change in pore shape. The second change is decrease in number of microfibers within the pore so that pore look more open that is, increase in pore clearance. These changes on the mask should be responsible for decline in efficiency after washing and drying cycle, in consistent with the data reported in Fig. 5.

### Conclusions

We studied the effect of surface morphology of locally available face masks on their PM filtering efficiency. Filtering efficiency of CM for ambient PM<sub>10</sub> was poorer than in SM. The poor efficiency was due to the presence of larger sized pores. Our study also demonstrated that washing and drying cycle deteriorates the filtering efficiency due to change in pore shape and clearance. We also found that stretching of the CM surface alters the pore size and potentially decreases the filtering efficiency. The findings of this study suggest that CM are not effective, and that effectiveness deteriorates if used after washing and drying cycles and if used under stretched condition. We believe that the findings of this study will be helpful for increasing public awareness among populations of developing countries where such masks are very common, and for policy makers to make and implement basic guidelines for face masks for public use.

### Supplemental Information

#### Supplemental Information 1

##### Axial scanning of a cloth mask.

A short video that shows scanning of a cloth mask (CM9) at various axial positions.

[Click here for additional data file.](#) (4.5M, wmv)

#### Supplemental Information 2

##### Axial scanning for a surgical mask.

A short video that shows scanning of surgical mask (SM) at various axial positions.

[Click here for additional data file.](#) (5.9M, wmv)

#### Supplemental Information 3

##### Raw data: survey, filtering efficiency, particle size, and pore size data.

[Click here for additional data file.](#) (13K, xlsx)



## Funding Statement

---

This work was supported by startup funding to Basant Giri from—Kathmandu Institute of Applied Sciences (No.KIAS2016-1). The funders had no role in study design, data collection and analysis, decision to publish, or preparation of the manuscript.

## Additional Information and Declarations

---

### Competing Interests

The authors declare that they have no competing interests.

### Author Contributions

Bhanu Bhakta Neupane conceived and designed the experiments, analyzed the data, contributed reagents/materials/analysis tools, authored or reviewed drafts of the paper, approved the final draft.

Sangita Mainali conceived and designed the experiments, performed the experiments.

Amita Sharma performed the experiments, prepared figures and/or tables.

Basant Giri analyzed the data, contributed reagents/materials/analysis tools, authored or reviewed drafts of the paper, approved the final draft.

### Data Availability

The following information was supplied regarding data availability:

The axial scanning of the cloth mask 9 (CM9) surgical mask (SM), and raw measurements are available in the [Supplemental Files](#).

## References

---

- Belkin (1997) Belkin NL. The evolution of the surgical mask: filtering efficiency versus effectiveness. *Infection Control & Hospital Epidemiology*. 1997;18(1):49–57. doi: 10.1086/647501. [[PubMed](#)] [[CrossRef](#)] [[Google Scholar](#)]
- Cherrie et al. (2018) Cherrie JW, Apsley A, Cowie H, Steinle S, Mueller W, Lin C, Horwell CJ, Sleenwenhoek A, Loh M. Effectiveness of face masks used to protect Beijing residents against particulate air pollution. *Occupational and Environmental Medicine*. 2018;75(6):446–452. doi: 10.1136/oemed-2017-104765. [[PMC free article](#)] [[PubMed](#)] [[CrossRef](#)] [[Google Scholar](#)]
- Chughtai, Seale & MacIntyre (2013) Chughtai AA, Seale H, MacIntyre CR. Use of cloth masks in the practice of infection control—evidence and policy gaps. *International Journal of Infection Control*. 2013;9(3):1–12. doi: 10.3396/ijic.v9i3.020.13. [[CrossRef](#)] [[Google Scholar](#)]
- Colbeck, Nasir & Ali (2010) Colbeck I, Nasir ZA, Ali Z. The state of indoor air quality in Pakistan—a review. *Environmental Science and Pollution Research*. 2010;17(6):1187–1196. doi: 10.1007/s11356-010-0293-3. [[PubMed](#)] [[CrossRef](#)] [[Google Scholar](#)]
- Drey, Graber & Bieschke (2013) Drey LL, Graber MC, Bieschke J. Counting unstained, confluent cells by modified bright-field microscopy. *BioTechniques*. 2013;55(1):28–33. doi: 10.2144/000114056. [[PMC free article](#)] [[PubMed](#)] [[CrossRef](#)] [[Google Scholar](#)]
- Gurung & Bell (2012) Gurung A, Bell ML. Exposure to airborne particulate matter in Kathmandu Valley, Nepal. *Journal of Exposure Science & Environmental Epidemiology*. 2012;22(3):235–242. doi: 10.1038/jes.2012.14. [[PubMed](#)] [[CrossRef](#)] [[Google Scholar](#)]
- Hell (2007) Hell SW. Far-field optical nanoscopy. *Science*. 2007;316(5828):1153–1158. doi: 10.1126/science.1137395. [[PubMed](#)] [[CrossRef](#)] [[Google Scholar](#)]

IQ Air (2018) IQ Air 2018 World air quality report: regional and city PM2.5 ranking. 2018.  
<https://www.airvisual.com/> <https://www.airvisual.com/>

Kim, Kabir & Kabir (2015) Kim K-H, Kabir E, Kabir S. A review on the human health impact of airborne particulate matter. *Environment International*. 2015;74:136–143.  
doi: 10.1016/j.envint.2014.10.005. [[PubMed](#)] [[CrossRef](#)] [[Google Scholar](#)]

MacIntyre & Chughtai (2015) MacIntyre CR, Chughtai AA. Facemasks for the prevention of infection in healthcare and community settings. *BMJ*. 2015;350:h694. doi: 10.1136/bmj.h694. [[PubMed](#)] [[CrossRef](#)] [[Google Scholar](#)]

MacIntyre et al. (2015) MacIntyre CR, Seale H, Dung TC, Hien NT, Nga PT, Chughtai AA, Rahman B, Dwyer DE, Wang Q. A cluster randomised trial of cloth masks compared with medical masks in healthcare workers. *BMJ Open*. 2015;5(4):e006577. doi: 10.1136/bmjopen-2014-006577.  
[[PMC free article](#)] [[PubMed](#)] [[CrossRef](#)] [[Google Scholar](#)]

Maleki et al. (2016) Maleki H, Sorooshian A, Goudarzi G, Nikfal A, Baneshi MM. Temporal profile of PM 10 and associated health effects in one of the most polluted cities of the world (Ahvaz, Iran) between 2009 and 2014. *Aeolian Research*. 2016;22:135–140. doi: 10.1016/j.aeolia.2016.08.006.  
[[PMC free article](#)] [[PubMed](#)] [[CrossRef](#)] [[Google Scholar](#)]

Maxted (2011) Maxted B. Dust masks for Indian quarry workers: a comparative analysis of the filtering efficiency of fabrics. *Journal of Humanitarian Engineering*. 2011;1:15–20. [[Google Scholar](#)]

Mirowsky et al. (2013) Mirowsky J, Hickey C, Horton L, Blaustein M, Galdanes K, Peltier RE, Chillrud S, Chen LC, Ross J, Nadas A, Lippmann M, Gordon T. The effect of particle size, location and season on the toxicity of urban and rural particulate matter. *Inhalation Toxicology*. 2013;25(13):747–757. doi: 10.3109/08958378.2013.846443. [[PMC free article](#)] [[PubMed](#)] [[CrossRef](#)] [[Google Scholar](#)]

Mueller et al. (2018) Mueller W, Horwell CJ, Apsley A, Steinle S, McPherson S, Cherrie JW, Galea KS. The effectiveness of respiratory protection worn by communities to protect from volcanic ash inhalation. Part I: filtration efficiency tests. *International Journal of Hygiene and Environmental Health*. 2018;221(6):967–976. doi: 10.1016/j.ijheh.2018.03.012. [[PubMed](#)] [[CrossRef](#)] [[Google Scholar](#)]

Neupane (2016) Neupane BB. Stimulated emission depletion microscopy resolves nanoparticle assembly on a porous membrane surface. *Nepal Journal of Science and Technology*. 2016;17:17–22. [[Google Scholar](#)]

Rauniyaar, Aryal & Neupane (2019) Rauniyaar J, Aryal GM, Neupane BB. Morphological study on particulate matter of Kathmandu valley. *Bibechana*. 2019;16:41–46.  
doi: 10.3126/bibechana.v16i0.19190. [[CrossRef](#)] [[Google Scholar](#)]

Reche et al. (2012) Reche C, Moreno T, Amato F, Viana M, Van Drooge BL, Chuang H-C, Bérubé K, Jones T, Alastuey A, Querol X. A multidisciplinary approach to characterise exposure risk and toxicological effects of PM10 and PM2.5 samples in urban environments. *Ecotoxicology and Environmental Safety*. 2012;78:327–335. doi: 10.1016/j.ecoenv.2011.11.043. [[PubMed](#)] [[CrossRef](#)] [[Google Scholar](#)]

Rengasamy, Eimer & Shaffer (2010) Rengasamy S, Eimer B, Shaffer RE. Simple respiratory protection—evaluation of the filtration performance of cloth masks and common fabric materials against 20–1000 nm size particles. *Annals of Occupational Hygiene*. 2010;54:789–798.  
doi: 10.1093/annhyg/meq044. [[PMC free article](#)] [[PubMed](#)] [[CrossRef](#)] [[Google Scholar](#)]

Ricardo & Phelan (2008) Ricardo R, Phelan K. Counting and determining the viability of cultured cells. *Journal of Visualized Experiments*. 2008;16:752. doi: 10.3791/752. [[PMC free article](#)] [[PubMed](#)] [[CrossRef](#)] [[Google Scholar](#)]

- Shakya et al. (2017) Shakya KM, Noyes A, Kallin R, Peltier RE. Evaluating the efficacy of cloth facemasks in reducing particulate matter exposure. *Journal of Exposure Science & Environmental Epidemiology*. 2017;27(3):352–357. doi: 10.1038/jes.2016.42. [[PubMed](#)] [[CrossRef](#)] [[Google Scholar](#)]
- Sharma et al. (2014) Sharma SK, Mandal TK, Saxena M, Sharma A, Datta A, Saud T. Variation of OC, EC, WSIC and trace metals of PM10 in Delhi, India. *Journal of Atmospheric and Solar-Terrestrial Physics*. 2014;113:10–22. doi: 10.1016/j.jastp.2014.02.008. [[CrossRef](#)] [[Google Scholar](#)]
- Singh et al. (2010) Singh MP, Singh VK, Patel DK, Tandon PK, Gaur JS, Behari JR, Yadav S. Face mask application as a tool to diminish the particulate matter mediated heavy metal exposure among citizens of Lucknow, India. *Science of the Total Environment*. 2010;408(23):5723–5728. doi: 10.1016/j.scitotenv.2010.08.041. [[PubMed](#)] [[CrossRef](#)] [[Google Scholar](#)]
- Stender et al. (2013) Stender AS, Marchuk K, Liu C, Sander S, Meyer MW, Smith EA, Neupane B, Wang G, Li J, Cheng J-X. Single cell optical imaging and spectroscopy. *Chemical Reviews*. 2013;113:2469–2527. [[PMC free article](#)] [[PubMed](#)] [[Google Scholar](#)]
- Van Der Sande, Teunis & Sabel (2008) Van Der Sande M, Teunis P, Sabel R. Professional and home-made face masks reduce exposure to respiratory infections among the general population. *PLOS ONE*. 2008;3(7):e2618. doi: 10.1371/journal.pone.0002618. [[PMC free article](#)] [[PubMed](#)] [[CrossRef](#)] [[Google Scholar](#)]
- Wang et al. (2008) Wang H, Zhuang Y, Wang Y, Sun Y, Yuan H, Zhuang G, Hao Z. Long-term monitoring and source apportionment of PM2.5/PM10 in Beijing, China. *Journal of Environmental Sciences*. 2008;20(11):1323–1327. doi: 10.1016/s1001-0742(08)62228-7. [[PubMed](#)] [[CrossRef](#)] [[Google Scholar](#)]
- World Health Organization (2016) World Health Organization Ambient air pollution: a global assessment of exposure and burden of disease. 2016. <https://www.who.int/airpollution/en/>  
<https://www.who.int/airpollution/en/>